



COMEG  
**Equipment  
catalog**

  
medical technologies



# Content

<b>1</b>	<b>ABOUT US</b> .....	<b>05</b>
<b>2</b>	<b>VIDEO CAMERAS</b> .....	<b>09</b>
<b>3</b>	<b>LIGHT SOURCES</b> .....	<b>21</b>
<b>4</b>	<b>INSUFFLATORS</b> .....	<b>31</b>
<b>5</b>	<b>FLUID MANAGEMENT</b> .....	<b>39</b>
<b>6</b>	<b>MONITORS</b> .....	<b>45</b>
<b>7</b>	<b>IMAGING SOFTWARE</b> .....	<b>55</b>
<b>8</b>	<b>MEDICAL CARTS</b> .....	<b>59</b>
<b>9</b>	<b>PACKS</b> .....	<b>69</b>
	<b>INFORMATION</b> .....	<b>75</b>



# About us



**Service & Assistance ..... 06**

**COMEG representative offices ..... 07**



COMEG

# About us

## SERVICE & ASSISTANCE

In our main plants, our on-site specialists are dedicated to servicing and providing expertises to your COMEG products:

- Repairs of all our products under warranty
- Free quotations if accepted for all repairs out of warranty
- Qualified repairs with original spare parts

• **COMEG**  
 (Endoscopic Equipment & Endoscopes)  
 SOPRO SA  
 ZAC Athelia IV- Avenue des Génévriers  
 13705 La Ciotat cedex - France  
 Tel +33(0)442 980 109  
 info@comegmedical.com

• **ACTEON®**  
 (Ultrasounds)  
 SATELEC  
 17 avenue Gustave Eiffel - BP 30216  
 33708 Merignac cedex - France  
 Tel +33(0)556 340 607  
 info@comegmedical.com

## COMEG REPRESENTATIVE OFFICES

Our local staff will support you, wherever you are in the world.

• **India - ACTEON® India**  
 B-94 G.I.D.C ELECTRONIC ESTATE  
 Sector 25  
 Gandhinagar - Gujurat - 382023  
 Tel +91 (79) 2328 7473  
 info.in@acteongroup.com

• **Italy - ACTEON® Italia**  
 Via Roma 45  
 21057 Olgiate olona (Varese)  
 Tel +39 0331 376 760  
 info.it@acteongroup.com

• **United Kingdom - ACTEON® UK**  
 Acteon House - Phoenix Park  
 Eaton Socon  
 St Neots PE19 8EP  
 Tel +44 1480 477 307  
 info.uk@acteongroup.com

• **Middle East - ACTEON® Middle East**  
 Al-Fanar Bldg. - Office (401)  
 247 Wasfi Al-Tall Str., Khalda  
 P.O.Box: 5746 - Amman Jordan  
 Tel +962 6 5534401  
 info.me@acteongroup.com

• **Taiwan - ACTEON® Taiwan**  
 11F., N°1, Songzhi Rd.  
 Xinyi Dist - Taipei City 11047  
 Taiwan (R.O.C.)  
 Tel +866 2 8729 2103  
 info.tw@acteongroup.com

• **China - ACTEON® China**  
 Office 401  
 No.12 Xinyuanxili Zhong Street,  
 Chaoyang District, Beijing 100027  
 Tel +86 10 646 57011/2/3  
 info.cn@acteongroup.com

• **USA - ACTEON® COMEG USA**  
 124 Gaither Drive, Suite 140  
 Mount Laurel, NJ 08054  
 United States  
 Tel. +1 856 222 9988  
 info.us@comegmedical.com

• **Thailand - ACTEON® Thailand**  
 23/45 Sorachai Building 16th Floor  
 Sukumvit 63 Road, Klongton Nua  
 Wattana, Bangkok 10110 Thailand  
 Tel +66 2 714 3295  
 info.th@acteongroup.com



- 📍 COMEG representative offices
- 📍 Production units



# Video cameras



<b>SYMBIOZ CAM+</b> .....	10
<b>SYMBIOZ CAM</b> .....	12
<b>DUO FULL HD</b> .....	14
<b>UBICAM® FULL HD</b> .....	16
<b>ACCESSORIES</b> .....	18



VIDEO CAMERAS

Full HD  
camera

SYMBIOZ Cam+  
Full HD



Reference	Designation
S_198_9000	SYMBIOZ CAM+ FULL HD CCU - EU
S_198_9001	SYMBIOZ CAM+ FULL HD CCU - US

## SPECIFICATION OF THE CAMERA CONTROL UNIT (CCU)

S\_198\_9000 & S\_198\_9001

- Digital zoom up to 2.5x
- Application and user MENU
- 6 optimized preset applications
- All functions available from the camera head
- Instant and contactless access to preset applications and personal profiles with the SCards\*
- Unlimited number of users profiles with personal presets up to 5
- Communication between SYMBIOZ Led & SYMBIOZ Flow thanks to ISYME concept
- Full HD Images and Videos recorder integrated (USB)
- Recommended USB stick format: FAT32 / exFAT max 2TB
- Automatic compensation function for defective pixels
- Automatic white balance
- Freeze, mirror and gain functions
- Brightness, details, red and blue gains, gamma, color adjustments
- Noise reducer: OFF / LOW / HIGH
- Electronic anti-moiré filter for flexible endoscopes
- On screen displayed adjustments
- Reset to the factory settings
- RF transmitter:
  - Type: RFID
  - Frequency: 13,56 MHz
  - Modulation feature: OOK
  - Transmitter power: 70 mW (+18 dBm)
- Video outputs:
  - CVBS: 1.0 V [P-P] / 75 ohms, Negative Sync
  - Y/C: Y: 1.0 V [P-P] / 75 ohms, C: 0.286 V [P-P] (NTSC), C: 0.3 V [P-P] V [P-P] (PAL) / 75 ohms, Negative Sync
  - RGB: 3 x 0.7 V [P-P] & 0.3 V [P-P] / 75 ohms
  - HD-SDI, 3G-SDI: 0.8 V [P-P] / 75 ohms SMPTE292M, SMPTE425M-A
  - DVI-D: 3x0.7Vcc & 0.3Vcc / 75Ω
- 2 peripheral outputs
- 7" 16/9 touch screen with intuitive interface
- Dimensions (W x H x D): 310 x 136 x 385mm
- Weight: 4200 g
- Protection type: IPX0 (not drip-proof)
- Power supply: 100 - 240 VAC / 50 - 60 Hz
- Power consumption: 50 VA
- Two T1AL - 250 V fuses (Marked UL/CSA only)
- 18 languages
- Continuous service

## SPECIFICATION OF THE CAMERA HEAD

S\_198\_8000

- 1CMOS Exmor R™ technology 1/2" Full HD sensor
- Compatible with all C-mount couplers
- 3 fully programmable buttons
- Free scope rotation and locking system
- Automatic or adjustable electronic shutter (1/50 to 1/100000)
- Resolution: HDTV 1080p format: 1920 x 1080 pixels
- Definition: 1080 lines
- Active pixels area: 1920 x 1080 pixels
- Progressive Scan Technology
- Acquisition in native 16:9 format
- Sensitivity: 0.1 lux
- Signal / Noise ratio: 57dB
- Cable length: 3 meters
- Dimensions (D x H): 149 x 53mm
- Weight: 150 g
- Protection type: IPX7 (waterproof)

## SPECIFICATION OF THE COUPLER

S\_413024

- HD 16-34mm zoom coupler
- C-mount, scope holder with locking mechanism
- Dimensions (D x H): 42 x 44mm
- Weight: 99 g



Reference	Designation / Description
S_198_8000	SYMBIOZ CAM+ Full HD - C-mount Camera head without coupler



Reference	Designation / Description
S_413024	F16-34MM COUPLER 16-34mm HD Zoom coupler - C-mount - scope holder

Medical devices of class I - CE / Manufacturer: SOPRO™ (France) / Distributed by SOPRO, under the commercial brand COMEG

Exmor R™ is an unregistered trademark of SONY

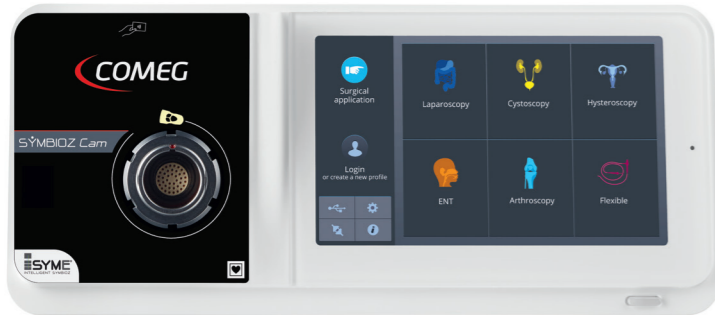
\* For SCARD, see after SYMBIOZ cameras chapter



VIDEO CAMERAS

Full HD  
camera

SYMBIOZ Cam  
Full HD



Reference	Designation
S_398_9000	SYMBIOZ CAM FULL HD CCU - EU
S_398_9001	SYMBIOZ CAM FULL HD CCU - US



Reference	Designation / Description
S_398_9002	SYMBIOZ CAM FULL HD CCU R - EU SYMBIOZ Cam Full HD Camera control unit with integrated recorder - EU
S_398_9003	SYMBIOZ CAM FULL HD CCU R - US SYMBIOZ Cam Full HD Camera control unit with integrated recorder - US



Reference	Designation / Description
S_398_8000	SYMBIOZ CAM SENSOR SYMBIOZ Cam Full HD - Camera head with integrated HD 15-35mm zoom coupler

## SPECIFICATION OF THE CAMERA CONTROL UNIT (CCU)

S\_398\_9000 & S\_398\_9001 / S\_398\_9002 & S\_398\_9003

- Digital zoom up to 2.5x
- Application and user menus
- 6 optimized preset applications
- All functions available from the camera head
- Instant and contactless access to preset applications and personal profiles with the SCards\*
- Unlimited number of profiles with personal presets up to 5
- Communication between SYMBIOZ Led & SYMBIOZ Flow thanks to ISYME concept
- Automatic compensation function for defective pixels
- Automatic white balance
- Freeze, mirror and gain functions
- Brightness, details, red and blue gains, gamma, color adjustments
- Noise reducer: OFF/ LOW / HIGH
- Electronic anti-moiré filter for flexible endoscopes
- On screen displayed adjustments
- Reset to the factory settings
- RF transmitter:
  - Type: RFID
  - Frequency: 13,56 MHz
  - Modulation feature: OOK
  - Transmitter power: 70 mW (+18 dBm)
- Video outputs:
  - CVBS: 1.0 V [P-P] / 75 ohms, Negative Sync
  - Y/C: Y: 1.0 V [P-P] / 75 ohms, C: 0.286 V [P-P] (NTSC), C:0.3 V [P-P] V [P-P] (PAL) / 75 ohms, Negative Sync
  - RGB: 3 x 0.7 V [P-P] & 0.3V [P-P] / 75 ohms
  - HD-SDI: 0.8 V [P-P] / 75 ohms SMPTE292M
  - DVI-D: 3 x 0.7 Vcc & 0.3 Vcc /75 ohms
- 2 peripheral outputs
- 7" 16/9 touch screen with intuitive interface
- Dimensions (W x H x D): 310 x 136 x 385mm
- Weight: 4300 g
- Protection type: IPX0 (not drip-proof)
- Power supply: 100 - 230 VAC / 50 - 60Hz
- Power consumption: 38 - 50 VA
- Two T2,5AL - 250 V fuses (Marked UL/CSA only)
- 18 languages
- Continuous service

### Option S\_398\_9002 & S\_398\_9003

- Full HD Images and Videos recorder integrated (USB)
- Recommended USB stick format: FAT32 max 256GB

## SPECIFICATION OF THE CAMERA HEAD

S\_398\_8000

- 3CMOS technology 1/3" Full HD sensors
- HD 15-35mm integrated zoom coupler
- 3 fully programmable buttons
- Free scope rotation and locking system
- Automatic or adjustable electronic shutter (1/50 to 1/100000)
- Resolution: HDTV 1080p format: 1920 x 1080 pixels
- Definition: 1080 lines
- Active pixels area: 1920 x 1080 pixels
- Progressive Scan Technology
- Acquisition in native 16:9 format
- Sensitivity: 5 lux
- Signal / Noise ratio: 54 dB
- Cable length: 3 meters
- Dimensions (D x H): 149 x 53mm
- Weight: 270 g
- Protection type: IPX7 (waterproof)

Medical devices of class I - CE / Manufacturer: SOPRO™ (France) / Distributed by SOPRO, under the commercial brand COMEG

\* For SCARD, see Accessories chapter



VIDEO CAMERAS

# Combined Cam / Led

**DUO**  
Full HD



Reference	Designation / Description
S_195_9000	DUO FULL HD - S195 - CCU - EU DUO FULL HD - S195 - Camera control unit - EU
S_195_9001	DUO FULL HD - S195 - CCU - US DUO FULL HD - S195 - Camera control unit - US

## SPECIFICATION OF THE CAMERA CONTROL UNIT (CCU)

S\_195\_9000 & S\_195\_9001

- Automatic white balance
- Video outputs:
  - 1 HDMI
  - 1 HD-SDI/3G-SDI
  - 1 USB 3.0 micro B
- Compatible with Storz® and Olympus® type light cables
- Electronic iris shutter
- Automatic thermal protection system
- Manual adjustment of the light intensity
- Anti-blinding feature with light cable detection
- LED technology
- LED lifetime up to 50 000 hours
- Color temperature: 5 400 K
- Intensity: max. 23 000 lux
- Brightness, detail, red and blue gains, color adjustments
- Gain: Off / Low / High
- Freeze feature accessible from the camera head
- Flexible mode accessible from the control unit and the camera head
- On screen displayed adjustments
- "SAVE" function to memorize the settings
- "RESET" function to restore to the factory settings
- Digital zoom up to 2.5x
- Full HD Images recorder integrated (USB) / .tiff format
- Recommended USB stick format: FAT32
- Touchscreen with intuitive interface
- 17 languages
- Dimensions (W x H x D): 260 x 100 x 215mm
- Weight: 1900 g
- Protection type: IPX0 (not drip-proof)
- Power supply: 100 - 240 VAC / 50 - 60 Hz
- Power consumption: 85 - 95 VA
- Two T 1,6 A - 250 V fuses (Marked UL/CSA only)
- Continuous service

## SPECIFICATION OF THE CAMERA HEAD

S\_195\_8000

- 1CMOS Exmor R™ technology 1/2" Full HD sensor
- 2 Programmable buttons
- Automatic electronic shutter (1/50 to 1/100 000)
- Resolution: 1920 x 1080 p
- Definition: 1080 lines
- Active pixels area: 1920 x 1080
- Cable length: 2,99 meters
- Dimensions (D x H): 130 x 47mm
- Weight (camera only): 150 g
- Protection type: IPX7 (waterproof)

## SPECIFICATION OF THE COUPLER

S\_024\_0001

- Focal length f=24 mm
- C-mount, scope holder with locking mechanism
- Weight: 90g
- Protection type: IPX7 (waterproof)



Reference	Designation / Description
S_195_8000	DUO FULL HD - S195 - SENSOR DUO FULL HD - S195 - Camera head - Without coupler



Reference	Designation / Description
S_024_0001	24MM HD COUPLER 3S V1 24mm HD coupler - C-mount - Scope holder with locking capacity - Weight: 90g - Protection type: IPX7 (waterproof) - Compatible with all C-mount cameras



VIDEO CAMERAS

# Full HD USB camera



## SPECIFICATION OF THE USB CAMERA HEAD

S\_191\_0001

- 1/2" 1CMOS sensor high sensibility
- Resolution: 1920 x 1080
- Active pixels area: 1920 x 1080
- Sensitivity: 0,1 lux (Type 2350mV, Condition 1/30s, F5,6)
- Signal/Noise Ratio: 52 dB
- Latence < 150 ms
- Automatic electronic shutter (1/25 to 1/30 000)
- OSD information
- 3 pre-programmed buttons allowing: photo and video capture, digital zoom, white balance, anti-moiré filter activation
- Automatic saving of the adjusted parameters
- Automatic white balance
- Automatic detection of the colour temperature
- Video parameter adjustments via UVC
- Electronic anti-moiré filter for flexible endoscopes
- Cable length: 2,95 meters, Ø = 5,5 mm
- Dimensions: L = 103 mm; Ø = 38 mm
- Weight (Camera head only): 96 g
- Standard USB 3.0 type A connector
- Power consumption: 2 VA
- Protection type: IPX7 - waterproof (except USB connector)
- Continuous service

## SPECIFICATION OF THE COUPLER

S\_024\_0001

- Focal length f=24 mm
- C-mount, scope holder with locking mechanism
- Weight: 90 g
- Protection type: IPX7 (waterproof)



Reference	Designation / Description
S_191_0001	UBICAM FULL HD USB 3.0 UBICAM® Full HD USB 3.0 - C-mount - without coupler



Reference	Designation / Description
S_024_0001	24MM HD COUPLER 3S V1 24mm HD coupler - C-mount - Scope holder with locking capacity - Weight: 90g - Protection type: IPX7 (waterproof) - Compatible with all C-mount cameras



VIDEO CAMERAS  
Accessories



Reference	Designation / Description
S_413024	F16-34MM COUPLER 16-34mm HD Zoom coupler - C-mount - scope holder - Compatible with all C-mount cameras  <ul style="list-style-type: none"> <li>• Medical device of class I - CE</li> <li>• Manufacturer: MGB Endoskopische Geräte GmbH (Germany)</li> </ul>



Reference	Designation / Description
S_024_0001	24MM HD COUPLER 3S V1 24mm HD coupler - C-mount - Scope holder with locking capacity - Weight: 90g - Protection type: IPX7 (waterproof) - Compatible with all C-mount cameras  <ul style="list-style-type: none"> <li>• Medical device of class I - CE</li> <li>• Manufacturer: SOPRO™ (France)</li> </ul>



Reference	Designation / Description
S_701004	18MM BEAMSPLITTER 90° COUPLER 18mm Beamsplitter 90° coupler - C-mount - 360° rotatable head - without eyepiece Protection type: IPX7 (waterproof) - Compatible with all C-mount cameras  <ul style="list-style-type: none"> <li>• Medical device of class I - CE</li> <li>• Manufacturer: ASAP (Germany)</li> </ul>



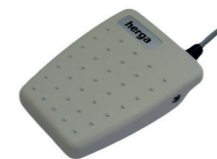
Reference	Designation / Description
302027	STORZ/OLYMPUS ADAPTER Storz®/Olympus® Adapter for Flexible Scopes



Reference	Designation / Description
302030	FUJINON ADAPTER Fujinon® Adapter for Flexible Scopes



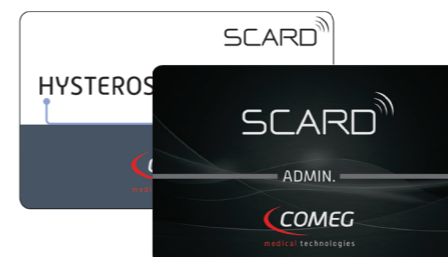
Reference	Designation / Description
302032	PENTAX ADAPTER Pentax® Adapter for Flexible Scopes



Reference	Designation / Description
009002	FOOTSWITCH WITH JACK CONNECTOR
009009	FOOTSWITCH WITH USB CONNECTOR



Reference	Designation / Description
700694	MEDICAL KEYBOARD QWERTY Medical Keyboard QWERTY - Waterproof IPX7
700695	MEDICAL KEYBOARD AZERTY Medical Keyboard AZERTY - Waterproof IPX7



Reference	Designation / Description
990245	KIT SCARD X7 Kit SCard x7 (Laparoscopy, Hysteroscopy, Cystoscopy, ENT, Arthroscopy, Flexible + 1 Admin)



Reference	Designation
990246	SCARD ADMIN X1



Reference	Designation
905021	BLANK SCARD X1





# Light sources

<b>SYMBIOZ LED</b> .....	<b>22</b>
<b>UBILIGHT®</b> .....	<b>24</b>
<b>STICK LED</b> .....	<b>26</b>
<b>ACCESSORIES</b> .....	<b>28</b>



LIGHT SOURCES  
**LED light source**



**SPECIFICATION**

S\_298\_0001 & S\_298\_0002

- LED technology
- LED lifetime: up to 50.000 hours
- Intensity max: 65 000 lux
- Automatic or manual adjustment of the light intensity
- Color temperature: 6500°K
- Automatic thermal protection system
- Anti-blinding feature with light cable detection
- Standby mode
- Electronic iris
- Power level memory
- Service menu with key information
- 7" 16/9 touchscreen with intuitive interface
- External control from SYMBIOZ camera head thanks to ISYME concept
- Compatible with Storz® and Olympus® light adapter cables
- Dimensions (W x H x D): 310 x 136 x 385mm
- Weight: 5000 g
- Protection type: IPX0 (not drip-proof)
- Power supply: 100 - 230 VAC / 50 - 60Hz
- Power consumption: 160 VA
- 18 languages
- Continuous service



Reference	Designation / Description
S_298_0001	SYMBIOZ LED - EU SYMBIOZ LED - Light source - EU
S_298_0002	SYMBIOZ LED - US SYMBIOZ LED - Light source - US



LIGHT SOURCES  
**LED light  
 source**



**SPECIFICATION**

S\_281\_0002

- LED technology
- LED lifetime: up to 50.000 hours
- Intensity max: 22 000 lux
- Intuitive adjustment of light intensity
- Color temperature: > 4500°K
- Automatic thermal protection system
- Anti-blinding feature with light cable detection
- Standby mode
- Power level memory
- Low heat generation

- Compatible with Storz® type light cables (Olympus® optional)
- Dimensions (W x H x D): 180 x 95 x 35mm
- Weight: 320 g
- Protection type: IPX0 (not drip-proof)
- Power supply: 100 - 240 VAC / 50 - 60 Hz
- Power consumption: 30 VA
- Transformer: 12V DC
- Continuous service



Reference	Designation / Description
S_281_0002	UBILIGHT - S281 - SOURCE LED UBILIGHT - S281 - LED light source - with external transformer - Storz® adapter by default (Light intensity equivalent to 100W XENON)

Option:



Reference	Designation / Description
402048	OLYMPUS ADAPTER FOR S281 Olympus® light source adapter for S281 Led light source



LIGHT SOURCES

# LED light stick



Reference	Designation / Description
200.02531.02	LED PORTABLE LIGHT SOURCE LED portable light source - with USB charger

## SPECIFICATION

### 200.02531.02

- LED technology
- Intensit max: 1 000 Lumens
- Intuitive adjustment of light intensity
- 5 brightness levels including a stroboscopy mode
- Color temperature: > 5 000°K
- Compatible with endoscopes with ACMI and WOLF connection
- Including USB charging station
- Battery charge indicated by a LED (red < 10% ; yellow ~ 10% - 60% ; green > 60%)
- Locking system to avoid unintentional switching ON
- Dimensions: 63 x 21mm
- Weight: 51 g (including the battery)
- Protection type: IPX8 (water resistant)
- Battery : 3,7 V / 550mAh / 2.0Wh



## ACCESSORIES FOR LIGHT SOURCES

### LIGHT CABLES



- Compatible with all light sources and autoclavable at 134°C (273,2°F)
- Reinforced sheath
- Universal model delivered without connectors

Ø	L.	Reference
4.8mm	3m	S_700382
	2.3m	S_700384
3.5mm*	3m	S_700216
	2.3m	S_700215

- \*For scope diameter < 4mm
- Medical device of class I - CE
  - Manufacturer: SOPRO™ (France)

## ACCESSORIES FOR LIGHT CABLES

### ENDOSCOPE SIDE CONNECTORS



Reference	Designation / Description
700051	STORZ ADAPTOR OPTIC SIDE Connector for universal light cable - endoscope side type Storz®/Olympus®



Reference	Designation / Description
700043	WOLF ADAPTOR OPTIC SIDE Connector for universal light cable - endoscope side type Acmi/Stryker®

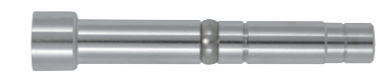


Reference	Designation / Description
700048	ACMI/STRYKER ADAPT OPTIC SIDE Connector for universal light cable - endoscope side type Acmi/Stryker®

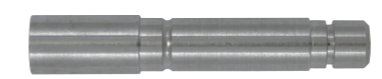
### LIGHT SOURCE SIDE CONNECTORS



Reference	Designation / Description
700044	STORZ ADAPT LIGHT SOURCE SIDE Connector for universal light cable - light source side type Storz®



Reference	Designation / Description
700045	OLYMPUS ADAPT LIGHT SOURCE SIDE Connector for universal light cable - light source side type Olympus®



Reference	Designation / Description
700046	WOLF ADAPTOR LIGHT SOURCE SIDE Connector for universal light cable - light source side type Wolf®/S&N



Reference	Designation / Description
700047	ACMI/STRYKER ADAPT SOURCE SIDE Connector for universal light cable - light source side type Acmi/Stryker®





# Insufflators

<b>SYMBIOZ FLOW</b> .....	32
<b>SOPRO™ 640</b> .....	34
<b>ACCESSORIES</b> .....	36



INSUFFLATORS  
45L/min

SYMBIOZ Flow



## SPECIFICATION

S\_698\_0001 & S\_698\_0002

- Maximum flow: 45L/min in high flow mode - 2L/min in low flow mode
- Automatic flow rate management according to leakages
- Manual or automatic low flow/high flow switching
- Set cavity pressure: From 0 to 25mmHg (accuracy of 1mmHg)
- 7" 16/9 touchscreen with intuitive interface displaying: immediate flow, intra-cavity pressure, low cylinder levels, total volume of CO<sub>2</sub> used, chronometer
- Clear messages displayed both on touchscreen and main monitor with sound alarms
- External control from SYMBIOZ camera head thanks to ISYME concept
- External exsufflation valve for over pressure to avoid cross contamination
- Purge feature
- Smooth design for easy disinfection
- Specific setting for Bariatric surgery
- Efficient in low pressures (8-9mmHg)
- Automatic calibration of the device
- Real time display of CO<sub>2</sub> cylinder pressure or central CO<sub>2</sub> supply pressure
- Patented autonomy feature: Displays in minutes the remaining time of insufflation (only if use with CO<sub>2</sub> bottle)
- Internal pre heating system
- CO<sub>2</sub> gas supply system: US 7/16" connector
- CO<sub>2</sub> gas cylinder compatible (10 to 60 bars)
- CO<sub>2</sub> central gas supply compatible (3 to 5 bars)
- Open-ended spanner intended for CO<sub>2</sub> high-pressure hose connector
- Disposable or reusable tubings
- Dimensions (W x H x D): 310 x 136 x 385mm
- Weight: 8000 g
- Protection type: IPX0 (not drip-proof)
- Power supply: 100 - 230 VAC / 50 - 60Hz
- Power consumption: 75 VA
- Two T2.5 AL - 250V delayed action fuses (Marked UR only)
- 18 languages
- Continuous service

Reference	Designation / Description
S_698_0001	SYMBIOZ FLOW INSUFFLATOR - EU SYMBIOZ FLOW - S698 - 45L/min insufflator - EU
S_698_0002	SYMBIOZ FLOW INSUFFLATOR - US SYMBIOZ FLOW - S698 - 45L/min insufflator - US

INSUFFLATORS

From 20L/min to 45L/min

SOPRO  
640



Reference	Designation / Description
	S640 - INSUFFLATOR 45L - EU
S_640_4002*	S640 - Insufflator 45L - With Autonomy feature - EU (German, French, English, Italian, Spanish)
	S640 - INSUFFLATOR 45L - US
S_640_4004*	S640 - Insufflator 45L - With Autonomy feature - US (German, French, English, Italian, Spanish)
	S640 - INSUFFLATOR 30L - EU
S_640_3005*	S640 - Insufflator 30L - With Autonomy feature - EU (German, French, English, Italian, Spanish)
	S640 - INSUFFLATOR 30L - US
S_640_3008*	S640 - Insufflator 30L - With Autonomy feature - US (German, French, English, Italian, Spanish)
	S640 - INSUFFLATOR 20L - EU
S_640_2002*	S640 - Insufflator 20L - EU (German, French, English, Italian, Spanish)
	S640 - INSUFFLATOR 20L - US
S_640_2004*	S640 - Insufflator 20L - US (German, French, English, Italian, Spanish)

COMMON SPECIFICATION

45L: S\_640\_4002 & S\_640\_4004

30L: S\_640\_3005 & S\_640\_3008

20L: S\_640\_2002 & S\_640\_2004

- Maximum flow rate in low flow mode: 2L/min
  - Automatic flow rate management according to leakages
  - Manual or automatic low flow/high flow switching
  - Set cavity pressure: From 0 to 25mmHg (accuracy of 1mmHg)
  - 5.7-inch LCD screen displaying: immediate flow, intra-cavity pressure, low cylinder levels, total volume of CO<sub>2</sub> used, chronometer
  - Clear messages displayed with sound alarms
  - Preventive maintenance message
  - External exsufflation valve for over pressure to avoid cross contamination
  - Purge feature
  - Automatic calibration of the device
  - Real time display of CO<sub>2</sub> cylinder pressure
  - Thumbwheel navigation and validation system
  - Internal pre heating system
  - CO<sub>2</sub> gas supply system: US 7/16" connector
  - CO<sub>2</sub> gas cylinder compatible (10 to 60 bars)
  - Open-ended spanner intended for CO<sub>2</sub> high-pressure hose connector
  - Disposable or reusable tubings
  - Dimensions (W x H x D): 300 x 340 x 145mm
  - Weight: 5000 g
  - Protection type: IPX0 (not drip-proof)
  - Power supply: 100 - 230 VAC / 50 - 60 Hz
  - Power consumption: 75 VA
  - Two 2,5 AT - 250V time-lag fuses (Marked UR only)
  - 5 languages (FR, IT, ES, EN, DEU)
  - Continuous service
- Option 45L: S\_640\_4002 & S\_640\_4004**  
**30L: S\_640\_3005 & S\_640\_3008**
- Patented autonomy function: displays in real time the remaining time of insufflation
  - CO<sub>2</sub> central gas supply compatible (3,5 to 4 bars)
  - Real time display of central CO<sub>2</sub> supply pressure

DEDICATED SPECIFICATION

	S 640 45L device S_640_4002 S_640_4004	S 640 30L device S_640_3005 S_640_3008	S 640 20L device S_640_2002 S_640_2004
Ref EU Ref US			
Maximum flow	45L/min	30L/min	20L/min
Bottle & wall supply	✓	✓	Bottle only
Autonomy feature	✓	✓	
External control via S 397 camera head with S_397_1000 (icomS technology)	✓	✓	

\* Please contact us for versions with languages: German, French, English, Russian, Chinese, Turkish





Reference	Designation / Description
607103L	STERILE INSUFF. TUBING X20 Sterile single use insufflation tubing made of PVC - With CO <sub>2</sub> viral filter (delivered by 20 units)

- Medical device of class IIa - CE 0459 (GMED)
- Manufacturer: SOPRO™ (France)

## CO<sub>2</sub> CYLINDER CONNECTION



Reference	Designation / Description
017023	PIN INDEX CONNECTION DIN 477-1 Pin Index connection for DIN 477-1 n°6
017034	PIN INDEX CONNECTION UNF 7/16 Pin Index connection for UNF 7/16" US

## CO<sub>2</sub> CONNECTION - BOTTLE



Reference	Designation / Description
S_017068L	FLEXIBLE US7/16-DIN477 FF 2M Flexible hose for high pressure bottle (60bars) US - DIN 477 FF, n°6, 2 meters FOR EUROPE
S_017036L	FLEXIBLE US7/16-DIN477 FF 1,25M Flexible hose for high pressure bottle (60bars) US - DIN 477 FF, n°6, 1,25 meters FOR EUROPE
S_017037L	FLEXIBLE US-UNF7/16 FF 1M Flexible hose for high pressure bottle (60bars) US - UNF 7/16, 1 meter FOR USA

- Medical device of class IIa - CE 0402 (LVFS)
- Manufacturer: Specma Wiro AB (Sweden)
- Distributed by SOPRO, under the commercial brand COMEG



Reference	Designation / Description
906054	EXTERNAL INSUFFLATOR FILTER External filter 5µm for CO <sub>2</sub> , to be mounted on the rear panel of the insufflator to filter the CO <sub>2</sub> from the bottle

## CO<sub>2</sub> CONNECTION - WALL PLUG



Reference	Designation / Description
700364L	FLEXIBLE BP 7M US 7/16 - AFNOR Flexible hose for low pressure (< 7 bars) US - AFNOR, 7 meters for Central CO <sub>2</sub> supply
700365L	FLEXIBLE BP 7M US 7/16 - DIN Flexible hose for low pressure (< 7 bars) US - DIN, 7 meters for Central CO <sub>2</sub> supply
700366L	FLEXIBLE BP 1M US - NIST Flexible hose for Central CO <sub>2</sub> supply (network 10 bars maximum) US - UNF 7/16" 1 meter - NIST
700367L	FLEXIBLE BP 6M NIST - DIN Flexible hose for Central CO <sub>2</sub> supply (network 10 bars maximum) 6 meters NIST - DIN
700368L	FLEXIBLE BP 6M NIST - AFNOR Flexible hose for Central CO <sub>2</sub> supply (network 10 bars maximum) 6 meters NIST - AFNOR





# Fluid management

<b>MULTI-INDICATION PUMP*</b> .....	40
<b>LAPAROSCOPY PUMP</b> .....	41
<b>ACCESSORIES</b> .....	42

\* Not for sale in the USA  
Medical devices of class IIb - CE 0197 (TUV) / Manufacturer: Wom (Germany) / Distributed by  
SOPRO, under the commercial brand COMEG



# Multi-indication pump

## C672



Reference	Designation / Description
S_672_0002*	C672 MULTI-INDICATION PUMP C672 Multi-indication pump for irrigation and suction - No specialty by default



Reference	Designation
700721*	TRANSPONDER UROLOGY
700722*	TRANSPONDER ARTHROSCOPY
700723*	TRANSPONDER LAPAROSCOPY
700730*	TRANSPONDER HYSTEROSCOPY

### SPECIFICATION

S\_672\_0002\*

- Pressure range:
  - Laparoscopy: not adjustable (3 different speeds)
  - Arthroscopy: 5-150 mmHg
  - Hysteroscopy: 15-150 mmHg
  - Urology: 10-90 mmHg
- Flow range:
  - Laparoscopy: 1.0-1.8 l/min
  - Arthroscopy: 0.1-1.8 l/min
  - Hysteroscopy: 50-500 ml/min
  - Urology: 25-500 ml/min

- Accuracy flow +/- 10%
- Suction capacity: Max. 2.0 l/min (depending on instrument characteristics)
- Dimensions (W x H x D): 380 x 148 x 388 mm
- Weight: 6300 g
- Power supply: 100-240 VAC / 50 - 60Hz
- Power consumption: 80 VA
- Max sound level: <80 dB

\* Not for sale in the USA

Medical devices of class IIa - CE 0197 (TUV) / Manufacturer: Wom (Germany) / Distributed by SOPRO, under the commercial brand COMEG

# Laparoscopy pump

## C673



Reference	Designation / Description
S_673_0002	C673 LAPAROSCOPY PUMP C673 Laparoscopic pump for irrigation and suction

### SPECIFICATION

S\_673\_0002

- Max. pump pressure: 450 mmHg
- Max. irrigation performance: 3.0 l/min
- Max. negative suction pressure: - 60 kPa
- Accuracy flow: ± 10 %
- Dimensions (W x H x D): 380 x 148 x 388 mm

- Weight: 6000 g
- Power supply: 100 - 240V / 50 - 60Hz
- Power consumption: 55 VA
- Max. sound level: < 80 dB

Medical devices of class IIa - CE 0197 (TUV) / Manufacturer: Wom (Germany) / Distributed by SOPRO, under the commercial brand COMEG

FLUID MANAGEMENT  
**Accessories**

**ACCESSORIES**

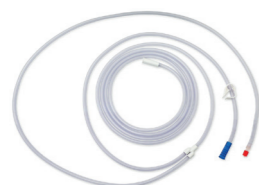
For: S\_672\_0002 & S\_673\_0002



Reference	Designation / Description
700720L	STERILE IRRIGATION TUBES Tube set RFID for irrigation, disposable, sterile (delivered by 10 units)



Reference	Designation / Description
700719*	REUSABLE IRRIGATION TUBES Tube set RFID for irrigation, reusable 20x, not sterile (delivered by 1 piece)



Reference	Designation / Description
700718L	STERILE SUCTION TUBES Tube set for suction with 2 connectors, disposable, sterile (delivered by 10 units)



Reference	Designation / Description
700717	REUSABLE VACUUM TUBES Tube set for vacuum with filter, not sterile (delivered by 10 units)





# Monitors

**OPERATING ROOM ..... 46**

- MONITOR 31,5" 4K ..... 46
- MONITOR 31" 4K ..... 47
- MONITOR 27" FULL HD ..... 48
- MONITOR 24" FULL HD ..... 49
- MONITOR 21,5" FULL HD ..... 50

**CONSULTING ROOM ..... 51**

- MONITOR 15" FULL HD ..... 51

**ACCESSORIES ..... 52**



MONITORS  
**Operating  
 room**

## Monitor 31,5” 4K



Reference	Designation / Description
S_700817	LG MONITOR 4K UHD 31,5” LG® Medical monitor 4K UHD 31,5”

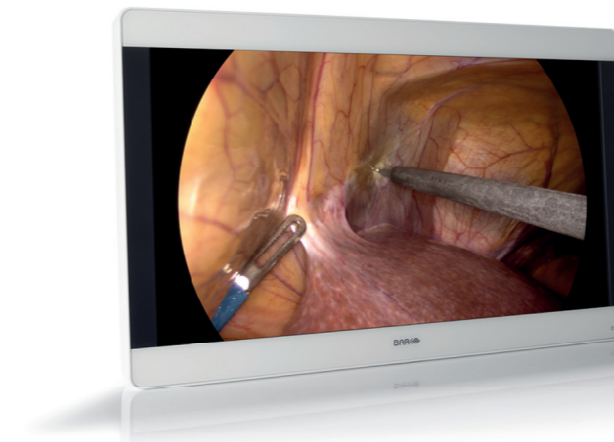
### SPECIFICATION

#### S\_700817

- Panel: 31.5” - TFT AM LCD / IPS-PRO technology / LED backlight
- Resolution: 4K UHD 3840 x 2160 pixels
- Luminance: 800cd/m<sup>2</sup>
- Contrast ratio: 1000:1
- Viewing Angle (H/V): 178° / 178°
- Aspect ratio: 16:9
- Colors: 1073 million (10-bit) / SRGB 115% (Deep Red)
- Video inputs: 1 x HDMI (2.0), 1 x 3G-SDI, 1 x DVI-I, 1 x DP (1.2)
- Video outputs: 1 x 3G-SDI, 1 x DVI-D, 1 x DP
- Mounting: 100x100 mm and 200x100 VESA
- Dimensions (W x H x D): 764,6 x 480,8 x 94,4 mm
- Weight: 12 200 g
- Power supply: 100 - 240 VAC / 50 - 60 Hz

Medical devices of class I - CE / Manufacturer: LG Electronics Inc (Republic of Korea) / Distributed by SOPRO, under the commercial brand COMEG

## Monitor 31” 4K



Reference	Designation / Description
S_700711	BARCO 4K 31” MONITOR Medical grade monitor BARCO® 4K 31”

### SPECIFICATION

#### S\_700711

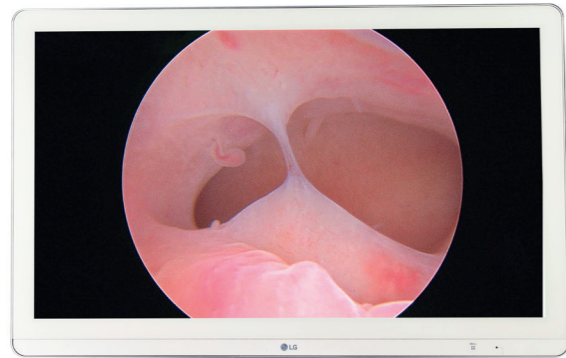
- Panel: 31” - TFT AM LCD / IPS-PRO technology / LED backlight
- Resolution: 4K-2K (4096 x 2160 pixels)
- Luminance: Max 550 cd/m<sup>2</sup>
- Contrast ratio: 1400:1
- Viewing Angle (H/V): 178° / 178°
- Aspect ratio: 17:9
- Colors: 1073 million (10-bit)
- Video inputs: 4K-UHD input selectable, FHD inputs (upscaled to UHD): 1x DVI, 1x 3G-SDI
- Video outputs: 1x 3G-SDI, 1x DVI
- Mounting: 100x100 & 200x100 mm VESA
- Dimensions (W x H x D): 777 x 472 x 93 mm
- Weight: 12100 g
- Power supply: 100 - 250 VAC / 47 - 63 Hz
- Protection type: IP20 (IP45 front side only)

Medical devices of class I - CE / Manufacturer: Barco (Belgium) / Distributed by SOPRO, under the commercial brand COMEG



MONITORS  
**Operating  
room**

Monitor 27"  
Full HD



Reference	Designation / Description
S_700794	LG MONITOR FULL HD 27" LG® Medical monitor Full HD 27"

**SPECIFICATION**

S\_700794

- Panel: 27" - TFT AM LCD / IPS-PRO technology / LED backlight
- Resolution: Full HD 1920 x 1080 pixels
- Luminance: 1000cd/m2
- Contrast ratio: 1000:1
- Viewing Angle (H/V): 178° / 178°
- Aspect ratio: 16:9
- Colors: 1073 million (10-bit) / SRGB 115% (Deep Red)
- Video inputs: 1 x HDMI (1.4), 1 x S-Video, 1 x Composite, 1 x 3G-SDI, 1 x DVI-I (Compatible with D-sub & Component via adaptor)
- Video outputs: 1 x 3G-SDI, 1 x DVI-D
- Mounting: 100x100 mm VESA
- Dimensions (W x H x D): 656,4 x 412,9 x 62,2 mm
- Weight: 7 700 g
- Power supply: 100 - 240 VAC / 50 - 60 Hz
- Protection type: IP35 / IP 32 (Front / Back)

Monitor 24"  
Full HD



Reference	Designation / Description
S_700713	NEOVO FULL HD 24" MONITOR Monitor AG NEOVO® 24" - Full HD - White color

**SPECIFICATION**

S\_700713

- Panel: 23,6" - LED-backlit TFT LCD
- Resolution: FHD 1920 x 1080 pixels
- Luminance: 250 cd/m2
- Contrast Ratio: 20,000,000: 1 (DCR)
- Viewing Angle (H/V): 178°/178°
- Colors: approx. 16,7 millions
- Response speed: 5 ms
- Video inputs: 1x DP, 1x HDMI, 1x VGA, 1x DVI, 2x BNC, 1x S-Video
- Video outputs: 2x BNC
- OSD languages: EN / ES / IT / PY / DE / FR / RO / PL / CS / NL / JA / CH
- Mounting: VESA 75/75mm and 100/100mm
- Dimensions (W x H x D): 562 x 397 x 155 mm
- Weight: 7900 g
- Power supply: 100 - 240 VAC / 50 - 75Hz
- Power consumption: < 34,5 VA
- Delivered with CD ROM (user manual), power cord, power adaptor, 15-Pin D-Sub cable, audio cable

MONITORS  
**Operating  
room**

Monitor 21,5"  
Full HD



Reference	Designation / Description
S_700545	NEOVO FULL HD 21,5" MONITOR Monitor AG NEOVO® 21,5" - Full HD - White color

**SPECIFICATION**

*S\_700545*

- Panel: 21,5" - LED-backlit TFT LCD
- Resolution: FHD 1920 x 1080 pixels
- Luminance: 250 cd/m<sup>2</sup>
- Contrast Ratio: 20,000,000: 1 (DCR)
- Viewing Angle (H/V): 170°/160°
- Colors: approx. 16,7 millions
- Response speed: 3 ms
- Video inputs: 1x DP, 1x HDMI, 1x VGA, 1x DVI, 2x BNC, 1x S-Video
- Video outputs: 2x BNC
- OSD languages: EN / ES / IT / PY / DE / FR / RO / PL / CS / NL / JA / CH
- Mounting: VESA 75/75mm and 100/100mm
- Dimensions (W x H x D): 513 x 369 x 155 mm
- Weight: 6700 g
- Power supply: 100 - 240 VAC / 50 - 75Hz
- Power consumption: < 34,5 VA
- Delivered with CD ROM (user manual), power cord, power adaptor, 15-Pin D-Sub cable, audio cable

MONITORS  
**Consulting  
room**

Monitor 15"  
Full HD



Reference	Designation / Description
S_700799	BEETRONICS Full HD 15" MONITOR BEETRONICS® non-medical Full HD 15" monitor

**SPECIFICATION**

*S\_700799*

- Panel: 15", matte, LED-IPS
- Resolution: 1920 x 1080 pixels
- Luminance: 400 cd/m<sup>2</sup>
- Contrast ratio: 700:1
- Viewing angle: 178° horizontal, 178° vertical
- Aspect ratio: 16:9 (4:3 adjustable)
- Video inputs: 1x HDMI, 1 x VGA, 1 x BNC (CVBS), 1 x RCA, 1 x USB
- Mounting: VESA 75mm
- Dimensions (W x H x D): 373 x 232 x 33mm
- Weight: 980 g (1598 g with stand)
- Power supply: 110 - 240 V / 50 - 60 Hz
- Power consumption: <15 Watt (0.5 Watt standby)



MONITORS  
**Accessories**



Reference	Designation / Description
700057	DESKTOP STAND FOR MONITOR Desktop stand for monitor with VESA mounting



Reference	Designation / Description
700376	EXTENSION CABLE ALIM. BARCO Extension cable alimentation for BARCO® monitor (to be used with long arm medical cart)



Reference	Designation / Description
703003	POWER SUPPLY AG NEOVO MONITOR Medical-grade power supply for AG Neovo® monitors



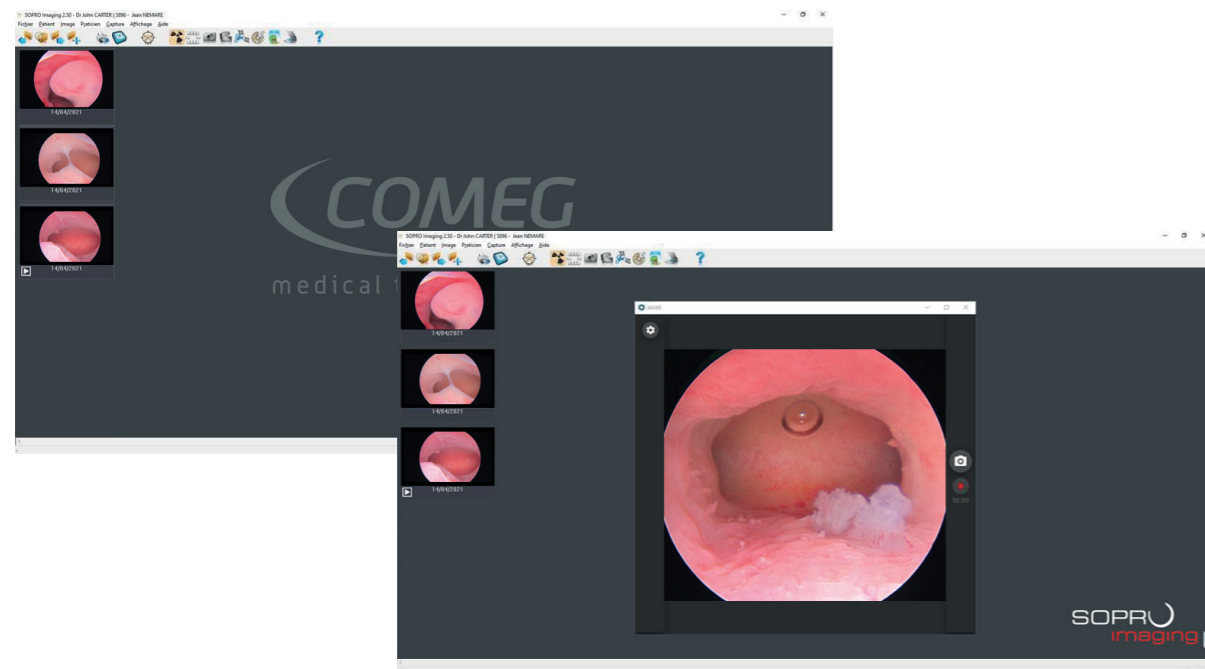


# Imaging software

**SOPRO™ IMAGING ..... 56**



IMAGING SOFTWARE  
**SOPRO**  
imaging



## SPECIFICATION

505026 & 990309

SOPRO™ Medical Imaging software constitutes a complete database of all your patients. A wide range of ergonomic and high-performance tools:

- Capture of images or video sequences,
- Photo/video annotation,
- Editing and personalization of medical reports,
- Simple and intuitive video editing,
- Audio recording,
- Data security.

## CONFIGURATION

### WINDOWS® MINIMUM REQUIRED CONFIGURATION

- Operating system: Windows® 10 Pro
- Processor: Intel® core i5
- RAM: 16 GB
- Hard disk: SSD 250 GB
- USB port:
- 1 USB 3.1 Gen1 Super Speed for Full HD cameras
- 1 USB 2.0 Hi-Speeds ports for SD cameras
- Graphic card: 1 GB RAM
- USB Chipset: Intel® or NEC® / RENESAS®
- Screen resolution: 1280 x 1024

### WINDOWS® RECOMMENDED CONFIGURATION

- Operating system: Windows® 10 Pro
- Processor: Intel® core i7 or more
- RAM: 16 GB
- Hard disk: SSD 1 TB or more
- USB port:
- 1 USB 3.1 Gen1 Super Speed for Full HD cameras
- 1 USB 2.0 Hi-Speeds ports for SD cameras
- Graphic card: chipset Nvidia® or ATI® / Unshared memory 2 GB RAM
- USB Chipset: Intel® or NEC® / RENESAS®
- Screen resolution: 1920 x 1080

## ACCESSORIES



Reference	Designation / Description
700694	MEDICAL KEYBOARD QWERTY Medical Keyboard QWERTY - Waterproof IPX7
700695	MEDICAL KEYBOARD AZERTY Medical Keyboard AZERTY - Waterproof IPX7

Reference	Designation / Description
505026	SOPRO IMAGING MEDICAL LICENSE SOPRO™ Medical Imaging (SIM) License
990309	SOPRO IMAGING MEDICAL USB STICK USB STICK: SOPRO™ Medical Imaging software



# Medical carts

<b>OPERATING CARTS .....</b>	<b>60</b>
<b>OPERATING CARTS ACCESSORIES .....</b>	<b>61</b>
<b>CONSULTATION CARTS .....</b>	<b>64</b>
<b>CONSULTATION CARTS ACCESSORIES ...</b>	<b>65</b>



MEDICAL CARTS  
**Operating  
 carts**

# COMEG Operating Cart



- Moulded top platform
- Camera eye piece holder
- 3x Adjustable shelves
- Concealed cable management
- 4x 125mm twin castors wheels (2 with brakes)
- 2x Pushing handles
- On/Off Isolating switch panel
- Ventilated rear door with cable winders & internal documents holder
- 8-Way IEC socket
  - 4x 2m IEC to IEC equipment cords
  - 4x 1m IEC to IEC equipment cords
- Comeg logos on side panels and back door

Reference	Designation / Description
700800	MEDICAL CART - EU COMEG Medical cart - EU
700801	MEDICAL CART WITH TRANSF - EU COMEG Medical cart - EU with transformer
700802	MEDICAL CART - UK COMEG Medical cart - UK
700803	MEDICAL CART WITH TRANSF - UK COMEG Medical cart - UK with transformer
700804	MEDICAL CART - US COMEG Medical cart - US
700805	MEDICAL CART WITH TRANSF - US COMEG Medical cart - US with transformer

## ACCESSORIES



Reference	Designation
700806	ARTICULATED ARM MAX 14KG Articulated arm with short extension (500mm) for monitor - maximum weight 14kg



Reference	Designation / Description
700808	ARTICULATED ARM MAX 17KG Articulated arm with short extension (500mm) for monitor - maximum weight 17kg



Reference	Designation / Description
700809	FIXED ARM FOR MONITOR Fixed arm for monitor



Reference	Designation / Description
700810	CO <sub>2</sub> BOTTLE HOLDER Medical CO <sub>2</sub> Bottle holder

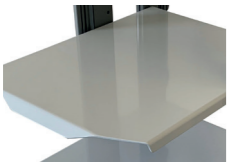
# Operating carts



Reference	Designation / Description
700811	DRAWER Drawer for COMEG cart



Reference	Designation / Description
700812	SERUM HOLDER Serum holder for COMEG cart



Reference	Designation / Description
700813	EXTRA SHELF 435 X 510MM Extra Shelf for COMEG cart 435 x 510mm



Reference	Designation / Description
700814	FLEXIBLE SCOPE HOLDER Flexible scope holder for COMEG cart



## ACCESSORIES



Reference	Designation / Description
700704	UBICART OPTIONAL EXTRA SHELF Extra shelf (460x435mm) for UBICART



Reference	Designation
700705	UBICART OPTIONAL PULLOUT SHELF



Reference	Designation
700706	UBICART OPTIONAL DRAWER



Reference	Designation / Description
700707	UBICART OPTIONAL SERUM HOLDER Serum holder on swivel arm for UBICART



Reference	Designation / Description
700708	UBICART OPTIONAL DOUBLE PIVOT Double pivot for VESA for UBICART

## MEDICAL CARTS

# Consulting room carts



- Shelf 460 x 435 mm
- 4 way Power strips
- Standard mount (VESA 75/100 mm)
- 2 x 1 m Power cords
- 2 x 2 m Power cords

## Ubicart

Reference	Designation / Description
S_700791	UBICART 150CM - EU Ubicart - EU
S_700793	UBICART 150CM TRANSFORMER EU Ubicart - EU with transformer
S_700792	UBICART 150CM - UK Ubicart - UK
S_700797	UBICART 150CM TRANSFORMER UK Ubicart - UK with transformer
S_700798	UBICART 150CM - US Ubicart - US

# Consulting room carts



Reference	Designation / Description
700709	UBICART SINGLESIDE STD RUNNER Single-side standard runner for UBICART



Reference	Designation / Description
700710	UBICART OPTIONAL STD RUNNER Standard runner for UBICART



Reference	Designation
700621	CAMERA HOLDER STAINLESS STEEL



Reference	Designation
700622	CAMERA HOLDER STAINLESS STEEL



Reference	Designation / Description
700309	POWER CORD 60CM Power cord 60cm IEC320-IEC320 (male/female)



# Packs

**DUO FULL HD ..... 70**

**UBIPACK® FULL HD ..... 72**





MEDICAL CARTS  
**DUO FHD**  
 packs

**DUO**  
 Full HD



	Ref EU S_K19_1000	Ref US S_K19_1001
<b>DUO</b> Full HD S195 - CCU - EU Ref EU: S_195_9000	✓	
<b>DUO</b> Full HD S195 - CCU - US Ref US: S_195_9001		✓
<b>DUO</b> Full HD S195 - SENSOR Ref: S_195_8000	✓	✓
24mm coupler Ref: S_024_0001	✓	✓
Light cable With Storz® adapters (700044/700051) Ref: S_700216	✓	✓



MEDICAL CARTS

# UBIPACK® Full HD

ubipack<sub>Full HD</sub>



Ubipack® is a registered trademark of SOPRO

Ref	ubipack <sub>Full HD</sub> S_K11_1000
ubicam <sub>Full HD</sub> without coupler Ref: S_191_0001	✓
24mm coupler Ref: S_024_0001	✓
SOPRO imaging Ref: 990309	✓
Licence Ref: 505026	✓
ubilight Ref: S_281_0001	✓
Light cable With Storz® adapters (700044/700051) Ref: S_700215	✓

Ubipack® is a registered trademark of SOPRO  
 Ubicam® is a registered trademark of SOPRO  
 SOPRO™ is an unregistered trademark of SOPRO





# Information

**NOTES** ..... 76

**YOUR LOCAL CONTACT** ..... 77







**SOPRO**

A company of ACTEON Group

ZAC Athélia IV  
Avenue des Genévriers  
13705 La Ciotat cedex  
France



[info@comegmedical.com](mailto:info@comegmedical.com)

[www.comegmedical.com](http://www.comegmedical.com)

Non contractual document - Ref. 011174L - 11/2022 - Copyright © 2022 SOPRO. All rights reserved.  
No information or part of this document may be reproduced or transmitted in any form without the prior permission of SOPRO.

